

Panel Product Range



Click on a **better solution**

The Complete Panel Solution

IMO's range of Panel products continues to deliver innovation and efficiency worldwide, and is where technology and engineering excellence come together.

IMO's Panel range has been specifically designed to meet the demanding needs of today's panel builders and engineers whose requirements can range from a simple DIN rail terminal through to a complete panel solution.

IMO's products allow panel builders globally to deliver significant advances through greater efficiency, reliability and performance, thereby increasing their competitive advantage and delivering the optimum panel solution.

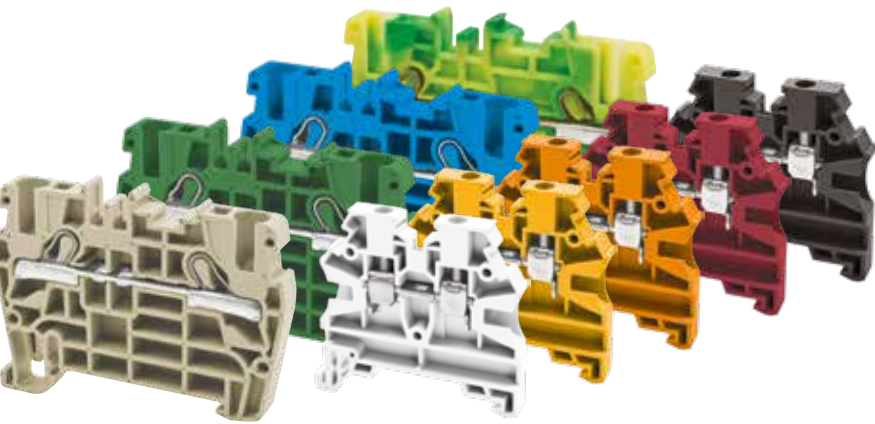
When purchasing from IMO you can be confident that over 40 years experience servicing the Panel Builder market has gone into the design and development of the IMO range.

Listed in this brochure are just some of the most popular products from the IMO Panel range. If you can't find what you are looking for, please contact the IMO Sales Desk on +44 (0)1707 414444. We will be happy to assist you with your enquiry.

Power Supplies



DIN Rail Terminals



Relays & Sockets

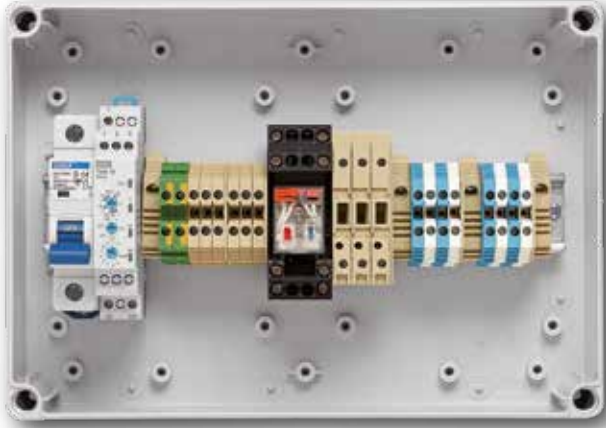


The IMO Panel Product Range

Pushbuttons	Pilot Lights	Cam Switches	Enclosures	Power Supplies	DIN Rail Timers	Timers
						

IMO Value Added Assembly Division will help you to:

- Reduce your stock level
- Reduce cost
- Ensure quality
- Increase productivity



Are you looking for a supplier for your assemblies who can offer:

- Access to a wide range of products
- Extended range of DIN terminals and accessories
- Relay and sockets, MCBs, power supplies, timers, contactors, signal interface units.
- Standard or custom marker solutions for DIN terminals
- Flexible packing facilities for individual or volume packing



IMO through its Assembly Division can provide Value Added Assembly solutions built to customer specification whether you are looking for prototypes, one-off projects, or small to large volume requirements with regular deliveries, IMO can offer you a solution.

As a world recognised manufacturer of electrical components, IMO have a wide range of connection, power, control and interface products readily available from stock and are always looking forward to the next challenge.

Your assembly can be as simple as 2 DIN terminals on a small piece of rail, to multiple products on DIN rail lengths up to 2m; and if required IMO have a range of standard enclosures which are available to accommodate your units, or we can design a custom solution with you.

Challenge us and tell us about your assembly needs and see what solution we can propose.

To save time and money call us today with your drawings, photos and specifications.

Enclosed Starters	Contactors	Isolators	Motor Protection Circuit Breakers	Miniature Circuit Breakers	DIN Rail Terminals	Relays & Sockets

Push Buttons & Pilot Lights



- IP67/IP65 Protection
- Opaque or Illuminated
- Aluminium, Black or Chrome Bezel
- Snap-On Contact Blocks
- Colour Coded Contacts
- International Approvals Including UL Approved Products
- Maintained or Spring Return
- Assembled Control Stations
- 1/2/3 Hole Push Button Enclosure
- Key Operated Switch
- Labelling Accessories

Emergency Push Buttons

Part Number	Description
BS3P3RED-0	Emergency Push Button 28mm, Red With White "O", Twist To Release, Black Bezel
BS3P45RED	Emergency Push Button 38mm, Red, Pull To Release
BS3P44S3	Emergency Push Button 40mm, Red Key Release
BC3P34RED-0	Emergency Push Button 40mm, Red With White "O", Twist To Release, Chrome Bezel
BS3P34RED-0	Emergency Push Button 40mm, Red With White "O", Twist To Release, Black Bezel
BS3P44RED	Emergency Push Button 30mm, Red, Pull To Release
B3-SK-YELLOW	Emergency Shroud for 40mm Max Diameter Button
BG10P45-11	Emergency Stop Station 40mm Red Button, Yellow Face, Pull To Release, 1N/O And 1N/C Contacts
BG10P34P-02	Emergency Stop Station 70mm Twist To Release Red Button, Yellow Enclosure Face, 2N/C Contacts
BG10P34P-11	Emergency Stop Station 70mm Twist To Release Red Button, Yellow Enclosure Face, 1N/O + 1N/C Contacts



Push Buttons / Rotary Knobs

Part Number	Description
BS3P14RED-0	Mushroom Head Push Button 40mm, Red With White "O"
BS3DBLA-ARROW	Push Button Spring Return Black With White Arrow Black Bezel
B3DBLACK	Push Button Spring Return Black, Aluminium Bezel
BS3DBLACK	Push Button Spring Return Black, Black Bezel
B3DBLUE	Push Button Spring Return Blue, Aluminium Bezel
BS3DBLUE	Push Button Spring Return Blue, Black Bezel
BS3DGRE-I	Push Button Spring Return Green With White "I" Black Bezel
BS3DGREEN	Push Button Spring Return Green, Black Bezel
BS3DRED	Push Button Spring Return Red, Black Bezel
B3DRED	Push Button Spring Return Red, Aluminium Bezel
B3P1RED	Push Button Spring Return 28mm Red, Aluminium Bezel
BS3DYELLOW	Push Button Spring Return Yellow, Black Bezel
B3KN2	Rotary Knob, 2 Position Maintained 60deg, Aluminium Bezel
BC3KN2	Rotary Knob, 2 Position Maintained 60deg, Chrome Bezel
BS3KN2	Rotary Knob, 2 Position Maintained 60deg, Black Bezel
B3KN3	Rotary Knob, 3 Position Maintained 60deg, Aluminium Bezel
BS3KN3	Rotary Knob, 3 Position Maintained 60deg, Black Bezel
BS3KN9	Rotary Knob, 2 Position Maintained 120deg, Black Bezel
BS3KN10	Rotary Knob, 2 Position Maintained 90deg, Black Bezel

Illuminated Push Buttons

Part Number	Description
B3DLRED	Illuminated Push Button Spring Return Red, Aluminium Bezel
B3DLGREEN	Illuminated Push Button Spring Return Green, Aluminium Bezel
B3DLYELLOW	Illuminated Push Button Spring Return Yellow, Aluminium Bezel
B3DLBLUE	Illuminated Push Button Spring Return Blue, Aluminium Bezel
BS3KL2	Illuminated Rotary Knob 2 Position Maintained, Black Bezel
BS3DT-GRE/RED	Double Actuation Push Button Green - Red, Black Bezel
BC3DT-GRE/RED	Double Actuation Push Button Green - Red, Chrome Bezel
B3DT-GRE/RED	Double Actuation Push Button Green - Aluminium Bezel

Transparent Lens Caps

Part Number	Description
B3RFGREEN	Lens Cap, Green
B3RFRED	Lens Cap, Red
B3RGREEN	Lens Cap, Green, Fresnel Lens
B3RRRED	Lens Cap, Red, Fresnel Lens



Contact Blocks



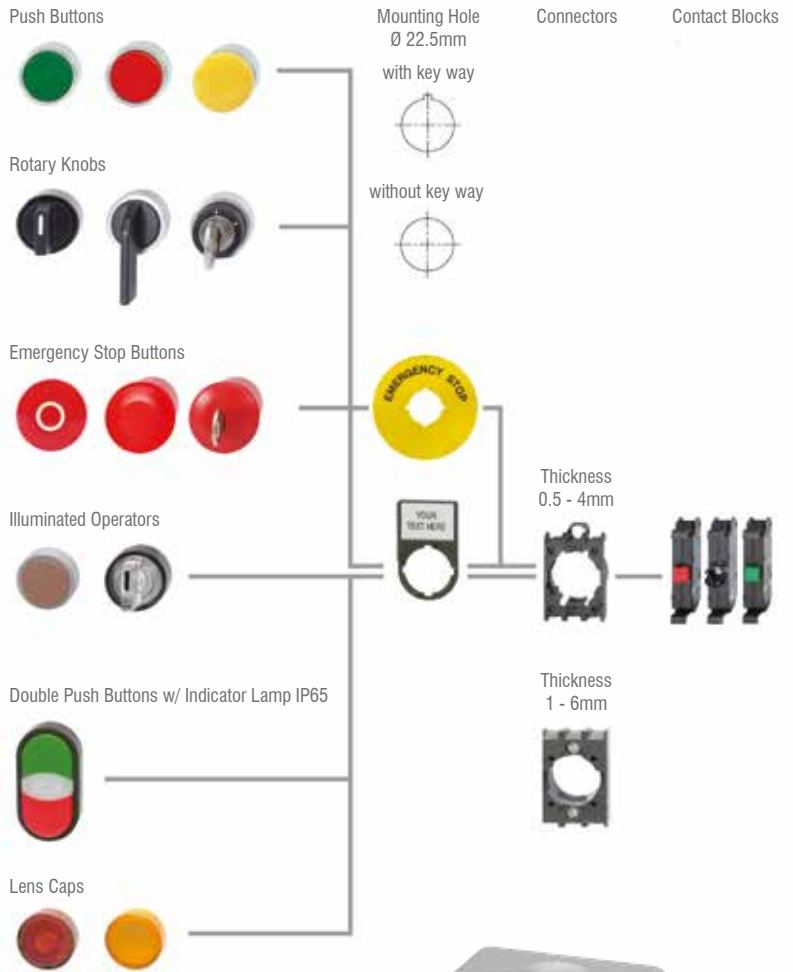
Part Number	Description
B3T01	1N/C Clips Onto B3S/B3M
B3T10	1N/O Clips Onto B3S/B3M
B4TU11	1N/O And 1N/C, for BG... Enclosures
B4TU10F	1N/O With Lamp Holder, for BG... Enclosures
B4TU10	1N/O, for BG... Enclosures
B4TU02	2N/C, for BG... Enclosures
B4TU20	2N/O, for BG... Enclosures
BG1	Pushbutton Enclosure 1 Hole Grey
BG1YEL	Pushbutton Enclosure 1 Hole Yellow
BG2	Pushbutton Enclosure 2 Hole Grey
BG3	Pushbutton Enclosure 3 Hole Grey
J7049	Pushbutton Collar tightening tool

LED Pilot Lights



Part Number	Description
LMB-110-GREEN	LED Pilot Light 110VAC Green
LMB-110-RED	LED Pilot Light 110VAC Red
LMB-110-WHITE	LED Pilot Light 110VAC White
LMB-110-YELLOW	LED Pilot Light 110VAC Yellow
LMB-230-GREEN	LED Pilot Light 230VAC Green
LMB-230-RED	LED Pilot Light 230VAC Red
LMB-230-WHITE	LED Pilot Light 230VAC White
LMB-230-YELLOW	LED Pilot Light 230VAC Yellow
LMB-24-BLUE	LED Pilot Light 24V AC/DC Blue
LMB-24-GREEN	LED Pilot Light 24V AC/DC Green
LMB-24-RED	LED Pilot Light 24V AC/DC Red
LMB-24-WHITE	LED Pilot Light 24V AC/DC White
LMB-24-YELLOW	LED Pilot Light 24V AC/DC Yellow

Quick Chart Selection



This is just a selection from our range.
For the entire range, please go to
www.imopc.com

B3RF..	B3P34RED-0	BS3P44RED	BS3P44S3	B3DL..	B3-SK-YELLOW	BG1	B4TU11.. Contact Block

Cam Switches



IMO's range of Cam Switches incorporates a unique building block system that allows for any number of switch variants to be built and supplied to the customer. Such is the flexibility of the Cam Switches, that they can be utilised in countless applications including mains/motor switching and control and instrumentation circuits.

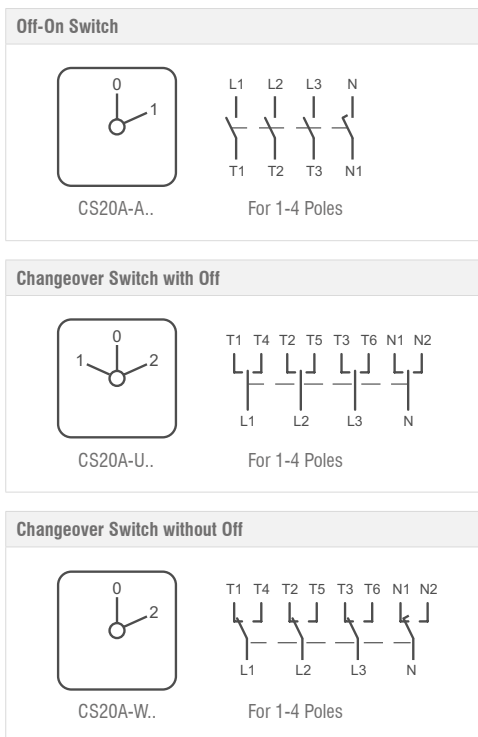
The standard contact rating is 20A, although higher ratings are available on request and these switches have double interruption per pole and two contacts per cell. Standard units incorporate a 22.5mm central fixing for panel mounting. The switch body and actuators are supplied separately to provide a choice of four different set up configurations. Connection from actuator to switch body is made through a solid aluminium shaft.

Manufactured in accordance with IEC 60947-3, the new Cam Switches carry an IP65 rating appropriately when mounted in a suitably rated enclosure and have 'finger proof' screw terminals. The switch body is supplied complete with legend plate and all units are UL/cUL approved.



Part Number	Description
CS20A-A1	1 Pole 2 Position 20A, On/Off With Legend Plate
CS20A-A2	2 Pole 2 Position 20A, On/Off With Legend Plate
CS20A-A4	4 Pole 2 Position 20A, On/Off With Legend Plate
CS20A-A8	8 Pole 2 Position 20A, On/Off With Legend Plate
CS20A-ST31	1 Pole 3 Position 20A, Step With Legend Plate
CS20A-ST33	3 Pole 3 Position 20A, Step With Legend Plate
CS20A-ST42	2 Pole 4 Position 20A, Step With Legend Plate
CS20A-ST45	5 Pole 4 Position 20A, Step With Legend Plate
CS20A-ST51	1 Pole 5 Position 20A, Step With Legend Plate
CS20A-ST52	2 Pole 5 Position 20A, Step With Legend Plate
CS20A-ST61	1 Pole 6 Position 20A, Step With Legend Plate
CS20A-U1	1 Pole 3 Position 20A, Changeover With Legend Plate
CS20A-U2	2 Pole 3 Position 20A, Changeover With Legend Plate
CS20A-U3	3 Pole 3 Position 20A, Changeover With Legend Plate
CS20A-U4	4 Pole 3 Position 20A, Changeover With Legend Plate
CS20A-U6	6 Pole 3 Position 20A, Changeover With Legend Plate
CS20A-W1	1 Pole 2 Position 20A, Changeover Without Off With Legend Plate
CS20A-W2	2 Pole 2 Position 20A, Changeover Without Off With Legend Plate
CS20A-W3	3 Pole 2 Position 20A, Changeover Without Off With Legend Plate
CS20A-W4	4 Pole 2 Position 20A, Changeover Without Off With Legend Plate
CS20A-W8	8 Pole 2 Position 20A, Changeover Without Off With Legend Plate
RB2	Cam Switch Handle, Round Bezel Lever
RBK2	Cam Switch Handle, Round Bezel, Key Operated
SP2	Cam Switch Handle, Escutcheon Plate Lever
SPK2	Cam Switch Handle, Escutcheon Plate, Key Operated

NOTE: Cam switches are supplied without handle or legend plate holder. See below for handle options.



Complete Switches		Handles			
CS20A-U1 & SP2	CS20A-U1 & RB2	RB2	RBK2	SP2	SPK2

Enclosures



- ABS / Polycarbonate Body
- Plain Sided Walls
- Colour RAL 7035 – Light Grey
- Circuit Board Slots in Base
- IP67 / IP66
- Plastic Screws Captive Once Fitted
- Pre-Moulded Fixing Points in Base
- Suitable for Housing Electronic Terminal Blocks, Electro-Mechanical Components & Industrial Equipment
- Polycarbonate Versions (144EP Range) are UL & cUL Approved



ABS / Polycarbonate Enclosures

Part Number	Description
144E0001	Enclosure, ABS (75 X 125 X 75)
144E0002	Enclosure, ABS (125 X 125 X 75)
144E0003	Enclosure, ABS (125 X 125 X 100)
144E0004	Enclosure, ABS (125 X 175 X 75)
144E0005	Enclosure, ABS (125 X 175 X 100)
144E0006	Enclosure, ABS (125 X 175 X 125)
144E0007	Enclosure, ABS (175 X 175 X 100)
144E0008	Enclosure, ABS (175 X 175 X 125)
144E0009	Enclosure, ABS (175 X 175 X 150)
144E0010	Enclosure, ABS (175 X 250 X 100)
144E0011	Enclosure, ABS (175 X 250 X 150)
144E1008	Enclosure, ABS (120 X 200 X 86)
144E1010	Enclosure, ABS (230 X 300 X 111)
144E2002	Transparent Lid Enclosure, ABS (125 X 125 X 75)
144E2003	Transparent Lid Enclosure, ABS (125 X 175 X 100)
144E2004	Transparent Lid Enclosure, ABS (125 X 175 X 150)
144EP0002	Enclosure, Polycarbonate (125 X 125 X 75)
144EP0004	Enclosure, Polycarbonate (125 X 175 X 75)
144EP0005	Enclosure, Polycarbonate (125 X 175 X 100)
144EP0006	Enclosure, Polycarbonate (125 X 175 X 125)
144EP0008	Enclosure, Polycarbonate (175 X 175 X 125)
144EP0010	Enclosure, Polycarbonate (175 X 250 X 100)
144EP0011	Enclosure, Polycarbonate (175 X 250 X 150)

Distribution Boxes

Part Number	Description
E-04W	4 Way IP65 Enclosure, 127x200x120, Transparent Door
E-08W	8 Way IP65 Enclosure, 200x200x120, Transparent Door
E-12W	12Way IP65 Enclosure 318x258x142, Transparent Door
E-24W	24Way IP65 Enclosure 318x383x142, Transparent Door
E-36W	36Way IP65 Enclosure 507x383x142, Transparent Door

Accessories

Part Number	Description
144A0001	Hinge Pair
144A0002	Fastening lug, 4 off
144A0003	Inspection window 2 mod.
144A0004	Inspection window 4 mod.
144A0005	Inspection window 6 mod.
144A0006	Inspection window 8 mod.
144A0007	Inspection window 10 mod.
144A0008	Inspection window 12 mod.
144A0009	Vent device IP34
144A0010	Vent device IP44
144R0001	DIN Rail For 144E0001
144R0002	DIN Rail For 144E0002, 0003
144R0004	DIN Rail For 144E0004, 0005, 0006, 0007, 0008 & 0009
144R0010	DIN Rail For 144E0010, 0011
E-Lock	Enclosure Lock To Suit E-xxW Enclosures



Power Supplies



IMO's range of industrial Power Supplies have all been designed especially for the control and automation marketplace. Offering the benefits of slim lines, universal input, and the security of IMO's 3-year warranty, the three ranges of PSU provide multiple choices for low power electrical or electronic systems commonly used in automation applications.

All IMO Power Supplies are UL approved and offer high efficiency, making them an exceptionally reliable power source for components such as sensors, relays, contactors, timers, temperature controllers, PLCs, process controllers and HMIs, all of which are available from IMO.

- Single & Three Phase Versions
- Universal Input
- AC/DC Operation
- High Efficiency up to 93%
- Class 2 Types
- Up to 960W
- Plastic & Metal Enclosures
- Short Circuit Protection
- DIN Rail Mountable



DPS-1 Single Phase

Part Number	Description
DPS-1-015-5DC	90-264VAC Input, 5VDC Output, 15W 3A, Plastic Body
DPS-1-018-12DC	90-264VAC Input, 12VDC Output, 18W 1.5A, Plastic Body
DPS-1-018-24DC	90-264VAC Input, 24VDC Output, 18W 0.75A, Plastic Body
DPS-1-030-5DC	85-264VAC Input, 5VDC Output, 30W 6A, Plastic Body
DPS-1-030-12DC	85-264VAC Input, 12VDC Output, 30W 2.5A, Plastic Body
DPS-1-030-24DC	85-264VAC Input, 24VDC Output, 30W 1.25A, Plastic Body
DPS-1-030-48DC	85-264VAC Input, 48VDC Output, 30W 0.625A, Plastic Body
DPS-1-050-5DC	85-264VAC Input, 5VDC Output, 50W 10A, Plastic Body
DPS-1-060-12DC	85-264VAC Input, 12VDC Output, 60W 5A, Plastic Body
DPS-1-060-24DC	85-264VAC Input, 24VDC Output, 60W 2.5A, Plastic Body
DPS-1-060-48DC	85-264VAC Input, 48VDC Output, 60W 1.25A, Plastic Body
DPS-1-100-12DC	115/230VAC Input, 12VDC Output, 100W 8.4A, Plastic Body
DPS-1-100-24DC	115/230VAC Input, 24VDC Output, 100W 4.2A, Plastic Body
DPS-1-100-48DC	115/230VAC Input, 48VDC Output, 100W 2.1A, Plastic Body

DPS-1-120-12DC	115/230VAC Input, 12VDC Output, 120W 10A, Metal Body
DPS-1-120-24DC	115/230VAC Input, 24VDC Output, 120W 5A, Metal Body
DPS-1-120-48DC	115/230VAC Input, 48VDC Output, 120W 2.5A, Metal Body
DPS-1-240-24DC	115/230VAC Input, 24VDC Output, 240W 10A, Metal Body
DPS-1-240-48DC	115/230VAC Input, 48VDC Output, 240W 5A, Metal Body
DPS-1-300-24DC	115/230VAC Input, 24VDC Output, 300W 12.5A, Metal Body
DPS-1-300-48DC	115/230VAC Input, 48VDC Output, 300W 6.25A, Metal Body
DPS-1-480-24DC	115/230VAC Input, 24VDC Output, 480W 20A, Metal Body
DPS-1-480-48DC	115/230VAC Input, 48VDC Output, 480W 10A, Metal Body

DPS-3 Three Phase

Part Number	Description
DPS-3-120-12DC	340-575VAC Input, 12VDC Output, 120W 10A, Metal Body
DPS-3-120-24DC	340-575VAC Input, 24VDC Output, 120W 5A, Metal Body
DPS-3-240-24DC	340-575VAC Input, 24VDC Output, 240W 10A, Metal Body
DPS-3-240-48DC	340-575VAC Input, 48VDC Output, 240W 5A, Metal Body
DPS-3-480-24DC	340-575VAC Input, 24VDC Output, 480W 20A, Metal Body
DPS-3-480-48DC	340-575VAC Input, 48VDC Output, 480W 20A, Metal Body
DPS-3-960-24DC	340-575VAC Input, 24VDC Output, 960W 40A, Metal Body
DPS-3-960-48DC	340-575VAC Input, 48VDC Output, 960W 20A, Metal Body





MPS-1 Single Phase Modular

Part Number	Description
MPS-1-007-5DC	90-264VAC Input, 5VDC Output, 7.5W 1.5A, Plastic Body
MPS-1-015-5DC	90-264VAC Input, 5VDC Output, 15W 3A, Plastic Body
MPS-1-022-5DC	90-264VAC Input, 5VDC Output, 22W 4.5A, Plastic Body
MPS-1-035-5DC	90-264VAC Input, 5VDC Output, 35W 7A, Plastic Body
MPS-1-060-5DC	90-264VAC Input, 5VDC Output, 60W 12A, Plastic Body
MPS-1-010-12DC	90-264VAC Input, 12VDC Output, 10W 0.83A, Plastic Body
MPS-1-024-12DC	90-264VAC Input, 12VDC Output, 24W 2A, Plastic Body
MPS-1-033-12DC	90-264VAC Input, 12VDC Output, 33W 2.75A, Plastic Body
MPS-1-054-12DC	90-264VAC Input, 12VDC Output, 54W 4.5A, Plastic Body
MPS-1-072-12DC	90-264VAC Input, 12VDC Output, 72W 6A, Plastic Body
MPS-1-010-24DC	90-264VAC Input, 24VDC Output, 10W 0.42A, Plastic Body
MPS-1-024-24DC	90-264VAC Input, 24VDC Output, 24W 1A, Plastic Body
MPS-1-036-24DC	90-264VAC Input, 24VDC Output, 36W 1.5A, Plastic Body
MPS-1-060-24DC	90-264VAC Input, 24VDC Output, 60W 2.5A, Plastic Body
MPS-1-100-24DC	90-264VAC Input, 24VDC Output, 100W 4.2A, Plastic Body

BPS-1 Single Phase Slimline

Part Number	Description
BPS-1-15-12DC	90-264VAC 127-370VDC Inputs, 15W 1.2A 12VDC, Plastic Body
BPS-1-30-12DC	90-264VAC 127-370VDC Inputs, 30W 2.5A 12VDC, Plastic Body
BPS-1-60-12DC	90-264VAC 127-370VDC Inputs, 60W 5A 12VDC, Plastic Body
BPS-1-100-12DC	90-264VAC 127-370VDC Inputs, 100W 8.3A 12VDC, Plastic Body
BPS-1-15-24DC	90-264VAC 127-370VDC Inputs, 15W 0.63A 24VDC, Metal Body
BPS-1-30-24DC	90-264VAC 127-370VDC Inputs, 30W 1.3A 24VDC, Metal Body
BPS-1-70-24DC	90-264VAC 127-370VDC Inputs, 70W 3A 24VDC, Metal Body
BPS-1-120-24DC	90-264VAC 127-370VDC Inputs, 120W 5A 24VDC, Metal Body
BPS-1-180-24DC	90-264VAC 127-370VDC Inputs, 180W 7.5A 24VDC, Metal Body
BPS-1-240-24DC	90-264VAC 127-370VDC Inputs, 240W 10A 24VDC, Metal Body





IMO's comprehensive range of DIN Rail mountable Timers delivers up-to-the-minute technology. Ranging from the simple single-function through to the multi-function timer with display, these timers are being used daily in all types of applications and industries. The ultra compact design and top-mounted terminals make installation easy, even in the tightest of panels, providing customers with a solution at minimal cost. Wide input voltage capability allow these products to be installed in applications across the world.

IMO's range of Panel Mount / Plug-In Timers provide users with a range of settings and functionality and timing ranges between 0.1 sec and 100hrs. Other key features include indication of time range, time up and power on timing. IMO Sockets are available to complement the panel mounting facility thereby giving the installer the option of DIN rail mounting, surface mounting or printed-circuit board mounting.

IMO Timers are always of the highest quality, and are backed with a Three Year Warranty. If you require a timer that is not listed here please contact IMO to receive information on the full range.

- 17.5mm DIN Rail Mount Range
- 48 DIN Panel Mount/Plug-In Range
- Multifunction
- On / Off / True Off Delay
- Asymmetrical
- Star Delta
- 24 -240VAC/DC, 400VAC (TDSD1)
- Wide Input Voltage Range



Panel Mount / Plug-In

Part Number	Description
TA11-A100-230AC	Timer 0.05s-60hr 2C/O Multi/F 5A, 11pin octal, 100-230VAC
TA11-A24AC/DC	Timer 0.05s-60hr 2C/O Multi/F 5A, 11pin octal, 24VAC/DC
TA8-A100-230AC	Timer 0.05s-60hr 2C/O On-DELAY 5A, 8pin octal, 100-230VAC
TA8-A24AC/DC	Timer 0.05s-60hr 2C/O On-DELAY 5A, 8pin octal, 24VAC/DC
TA8-DA100-230AC	Timer 0.1m-12m 2C/O True Off-DELAY 5A, 8pin octal, 100-230VAC
TA8-SA100-230AC	Timer 0.05s-60hr 1C/O On-DELAY 5A, 8pin octal, 100-230VAC
TA8-TA100-230AC	Timer 0.05s-60hr 2C/O Asymmetrical 5A, 8pin octal, 100-230VAC
TY4-12DC	14 Pin Plug-In On Delay Timer, 0.1s-100h, 12VDC 4C/O
TY4-24DC	14 Pin Plug-In On Delay Timer, 0.1s-100h, 24VDC 4C/O
TY4-24AC	14 Pin Plug-In On Delay Timer, 0.1s-100h, 24VAC 4C/O
TY4-115AC	14 Pin Plug-In On Delay Timer, 0.1s-100h, 115VAC 4C/O
TY4-230AC	14 Pin Plug-In On Delay Timer, 0.1s-100h, 230VAC 4C/O

DIN Rail Mountable

Part Number	Description
TDM10	Multifunction DIN Timer 10 Func, 1C/O, 24-230V AC/DC
TDAS	Multifunction Asymmetrical DIN Timer, 1C/O, 24-230V AC/DC
TDSD1	Star/Delta DIN Timer 20-500ms, 2C/O, 230-400VAC



Istart Enclosed Starters



- Push button stop/start
- IP65 ABS enclosure
- Prewired to accept overload (U12/16E..)



Part Number	Description
DOL10110	DOL Starter 4kW 10A Start and Stop, 110VAC coil
DOL10230	DOL Starter 4kW 10A Start and Stop, 230VAC coil
DOL10400	DOL Starter 4kW 10A Start and Stop, 400VAC coil
DOL18110	DOL Starter 7.5kW 18A Start and Stop, 110VAC coil
DOL18230	DOL Starter 7.5kW 18A Start and Stop, 230VAC coil
DOL18400	DOL Starter 7.5kW 18A Start and Stop, 400VAC coil

Modular Heating & Lighting Contactors



- Suitable for Control of Lamps, Heating, Air-Conditioning & Motor Control
- 2 or 4 Pole Version
- 20A up to 63A 400V AC1
- Multiple Pole Configuration Available
- Space Saving Design
- Low Switching Noise
- Low Power Consumption
- Coil Voltage 230VAC or 24VAC



Part Number	Description
HC20-20230	20A 2 Pole N/O 230VAC coil
HC20-02230	20A 2 Pole N/C 230VAC coil
HC20-2024	20A 2 Pole N/O 24VAC coil
HC25-20230	25A 2 Pole N/O 230VAC coil
HC25-40230	25A 4 Pole N/O 230VAC coil

Part Number	Description
HC25-04230	25A 4 Pole N/C 230VAC coil
HC40-20230	40A 2 Pole N/O 230VAC coil
HC40-40230	40A 4 Pole N/O 230VAC coil
HC63-20230	63A 2 Pole N/O 230VAC coil
HC63-40230	63A 4 Pole N/O 230VAC coil



Contactors 4 - 400kW



- 10A up to 1200A 400V AC3
- Minimum Size & Maximum Performance
- AC & DC Operated
- Ambient Temperature -40°C to +90°C
- DIN Rail Mounting up to 115A AC3
- Bifurcated Aux. Contacts
- High Contact Reliability
- 4 Pole Full Rated Version Available
- Coil Connection Top & Bottom (MC10N to MC22N)



Micro Contactors (MA04, MA05)

Part Number	Description
MA04-S-22230AC	Micro Relay Cont 4P (2N/O+2N/C), 3A AC15, 230VAC coil
MA05-S-01110AC	Micro Cont 3P Open 2.2kW 5A AC3, 1N/C Aux. 110VAC coil
MA05-S-0124AC	Micro Cont 3P Open 2.2kW 5A AC3, 1N/C Aux. 24VAC coil
MA05-S-10110AC	Micro Cont 3P Open 2.2kW 5A AC3, 1N/O Aux. 110VAC coil
MA05-S-10230AC	Micro Cont 3P Open 2.2kW 5A AC3, 1N/O Aux. 230VAC coil
MA05-S-1024DC	Micro Cont 3P Open 2.2kW 5A AC3, 1N/O Aux. 24VDC coil
MA05-R-S-0124AC	Micro Rev Cont 3P Open 2.2kW 5A AC3, 1N/C Aux. 24VAC coil
MA05-P-0124AC	Micro Cont PCB 3P Open 2.2kW 5A AC3, 1N/C Aux. 24VAC coil

Miniature Contactors (MR07, MB09, MB12)

Part Number	Description
MR07-S-22230	Mini Relay 4P (2N/O+2N/C), 3A AC15, 230VAC coil
MB09-S-10=24	Mini Cont 3P Open 4kW 9A AC3, 1N/O Aux, 24VDC coil
MB09-S-1048	Mini Cont 3P Open 4kW 9A AC3, 1N/O Aux, 48VAC coil
MB09-S-10110	Mini Cont 3P Open 4kW 9A AC3, 1N/O Aux, 110VAC coil
MB09-S-01230	Mini Cont 3P Open 4kW 9A AC3, 1N/C Aux, 230VAC coil
MB09-S-10230	Mini Cont 3P Open 4kW 9A AC3, 1N/O Aux, 230VAC coil
MB09-P-10=24	Mini Cont 3P Open 4kW 9A AC3, 1N/C Aux, PCB mount, 24VDC coil
MB12-S-10=24	Mini Cont 3P Open 5.5kW 12A AC3, 1N/O Aux, 24VDC coil

Standard Contactors (MC10N - MC22N)

Part Number	Description
MC10N-S-1024DC	Contact 3P Open 4kW 10A AC3, 1N/O Aux, 24VDC coil
MC10N-S-10110AC	Contact 3P Open 4kW 10A AC3, 1N/O Aux, 110VAC coil
MC10N-S-10230AC	Contact 3P Open 4kW 10A AC3, 1N/O Aux, 230VAC coil
MC14N-S-1024AC	Contact 3P Open 5.5kW 14A AC3, 1N/O Aux, 24VAC coil
MC14N-S-10230AC	Contact 3P Open 5.5kW 14A AC3, 1N/O Aux, 230VAC coil
MC14N-S-10400AC	Contact 3P Open 5.5kW 14A AC3, 1N/O Aux, 400VAC coil
MC18N-S-1024DC	Contact 3P Open 7.5kW 18A AC3, 1N/O Aux, 24VDC coil
MC18N-S-10230AC	Contact 3P Open 7.5kW 18A AC3, 1N/O Aux, 230VAC coil
MC22N-S-10110AC	Contact 3P Open 11kW 22A AC3, 1N/O Aux, 110VAC coil
MC22N-S-10230AC	Contact 3P Open 11kW 22A AC3, 1N/O Aux, 230VAC coil
MC10N-S-00-22110AC	Contact 4P (2N/O+2N/C) 4kW 10A AC3, 110VAC coil
MC10N-S-00-31110AC	Contact 4P (3N/O+1N/C) 4kW 10A AC3, 110VAC coil
MC10N-S-00-40230AC	Contact 4P Open 4kW 10A AC3, 230VAC coil
MC18N-S-00-40110AC	Contact 4P Open 7.5kW 18A AC3, 110VAC coil

Standard Contactors (MC24 - MC115)

Part Number	Description
MC24-S-00110	Contact 3P Open 11kW 24A AC3, 110VAC coil
MC24-S-00230	Contact 3P Open 11kW 24A AC3, 230VAC coil
MC24-S-00=24	Contact 3P Open 11kW 24A AC3, 24VDC coil
MC32-S-00110	Contact 3P Open 15kW 32A AC3, 110VAC coil
MC32-S-00230	Contact 3P Open 15kW 32A AC3, 230VAC coil
MC32-S-0024	Contact 3P Open 15kW 32A AC3, 24VAC coil
MC40-S-00230	Contact 3P Open 18.5kW 40A AC3, 230VAC coil
MC50-S-00400	Contact 3P Open 22kW 50A AC3, 400VAC coil
MC62-S-00110	Contact 3P Open 30kW 62A AC3, 110VAC coil
MC74-S-00230	Contact 3P Open 37kW 74A AC3, 230VAC coil
MC90-S-00230	Contact 3P Open 45kW 90A AC3, 230VAC/DC coil
MC90-S-00110	Contact 3P Open 45kW 90A AC3, 110VAC/DC coil
MC115-S-00230	Contact 3P Open 55kW 115A AC3, 230VAC/DC coil



Capacitor Switching Contactors for reactive or non-reactive capacitor banks

Part Number	Description
MC18N-K-10400AC	12.5kVar Cap. Sw. Contactor 3P, 1N/O Aux. 400VAC coil
MC18N-K-10230AC	12.5kVar Cap. Sw. Contactor 3P, 1N/O Aux. 230VAC coil
MC32-K-00110	25kVar Cap. Sw. Contactor, 3P, 110VAC coil
MC32-K-00230	25kVar Cap. Sw. Contactor, 3P, 230VAC coil
MC32-K-00400	25kVar Cap. Sw. Contactor, 3P, 400VAC coil
MC50-K-00400	33.3kVar Cap. Sw. Contactor, 3P, 400VAC coil
MC62-K-00110	50kVar Cap. Sw. Contactor, 3P, 110VAC coil
MC62-K-00230	50kVar Cap. Sw. Contactor, 3P, 230VAC coil
MC62-K-00400	50kVar Cap. Sw. Contactor, 3P, 400VAC coil
MC74-K-00230	75kVar Cap. Sw. Contactor, 3P, 230VAC coil
MC74-K-00400	75kVar Cap. Sw. Contactor, 3P, 400VAC coil
MC115-K-00230	100kVar Cap. Sw. Contactor, 3P, 230VAC coil
MC115-K-00400	100kVar Cap. Sw. Contactor, 3P, 400VAC coil

DC Operated Contactor low power consumption 3W inrush-sealed

Part Number	Description
MCD10-S-10=24	Contactor 4kW 10A 3P, 1 N/O Aux. 24VDC coil
MCD14-S-10=24	Contactor 5.5kW 14A 3P, 1 N/O Aux. 24VDC coil
MCD18-S-10=24	Contactor 7.5kW 18A 3P, 1 N/O Aux. 24VDC coil
MCD22-S-10=24	Contactor 11kW 22A 3P, 1 N/O Aux. 24VDC coil
MCD32-S-00=24	Contactor 15kW 32A 3P, 24VDC coil
MCD40-S-00=24	Contactor 18.5kW 40A 3P, 24VDC coil

Accessories

Part Number	Description
MBA-11	1N/O + 1N/C for MB09-MB12 contactors - top mount
MBA-22	2N/O + 2N/C for MB09-MB12 contactors - top mount
MCA01	1N/C Contact, For MC10 to MC115 Contactors, Top Mount
MCA10	1N/O Contact, For MC10 to MC115 Contactors, Top Mount
MCAH01	High Switching Capacity 25A AC1, 1N/C Contact, Top Mount
MCAH10	High Switching Capacity 25A AC1, 1N/O Contact, Top Mount
MCAS-11	1N/O + 1N/C, For MC24 to MC115 Contactors, Side Mount
MCAT11	1N/O + 1N/C, For MC151 to MC316 Contactors, Top Mount
MC-I-W	Interlock for MC(D)10 to MC(D)40 Contactors
MC-I-X	Interlock for MC50 to MC74 Contactors
MC-I-Y	Interlock for MC90 to MC115 Contactors

Thermal Overload Relays

Part Number	Description
U12/16E0.9-MC	Manual reset Overload 0.6-0.9A, MC10N-MC22N
U12/16E1.2-MC	Manual reset Overload 0.8-1.2A, MC10N-MC22N
U12/16E1.8-MC	Manual reset Overload 1.2-1.8A, MC10N-MC22N
U12/16E2.7-MC	Manual reset Overload 1.8-2.7A, MC10N-MC22N
U12/16E4-MC	Manual reset Overload 2.7-4A, MC10N-MC22N
U12/16E6-MC	Manual reset Overload 4-6A, MC10N-MC22N
U12/16E9-MC	Manual reset Overload 6-9A, MC10N-MC22N
U12/16E11-MC	Manual reset Overload 8-11A, MC10N-MC22N
U12/16E14-MC	Manual reset Overload 10-14A, MC10N-MC22N
U12/16E18-MC	Manual reset Overload 13-18A, MC10N-MC22N
U12/16E23-MC	Manual reset Overload 17-23A, MC10N-MC22N
U12/16E30-MC	Manual reset Overload 22-30A, MC10N-MC22N
MCOR-1-0.18	Man./Auto reset Overload 0.12-0.18A, MC10N-MC32
MCOR-1-0.27	Man./Auto reset Overload 0.18-0.27A, MC10N-MC32
MCOR-1-0.4	Man./Auto reset Overload 0.27-0.4A, MC10N-MC32
MCOR-1-0.6	Man./Auto reset Overload 0.4-0.6A, MC10N-MC32
MCOR-1-0.9	Man./Auto reset Overload 0.6-0.9A, MC10N-MC32
MCOR-1-1.2	Man./Auto reset Overload 0.8-1.2A, MC10N-MC32
MCOR-1-1.8	Man./Auto reset Overload 1.2-1.8A, MC10N-MC32
MCOR-1-2.7	Man./Auto reset Overload 1.8-2.7A, MC10N-MC32
MCOR-1-4	Man./Auto reset Overload 2.7-4A, MC10N-MC32
MCOR-1-6	Man./Auto reset Overload 4-6A, MC10N-MC32
MCOR-1-9	Man./Auto reset Overload 6-9A, MC10N-MC32
MCOR-1-11	Man./Auto reset Overload 8-11A, MC10N-MC32
MCOR-1-14	Man./Auto reset Overload 10-14A, MC10N-MC32
MCOR-1-18	Man./Auto reset Overload 13-18A, MC10N-MC32
MCOR-1-24	Man./Auto reset Overload 17-24A, MC10N-MC32
MCOR-1-32	Man./Auto reset Overload 23-32A, MC10N-MC32
MCOR-2-14	Manual reset Overload 10-14A, MC24-MC40
MCOR-2-20	Manual reset Overload 14-20A, MC24-MC40
MCOR-2-28	Manual reset Overload 20-28A, MC24-MC40
MCOR-2-42	Manual reset Overload 28-42A, MC24-MC40



AC Isolators



IMO offers a comprehensive range of high-quality AC Isolators with switching capabilities ranging from 20A to 125A, both in 3 and 4 Poles. Within the range, there are a number of different mounting types including Panel Mount, DIN Rail Mount and Enclosed, plus there are a range of handles and extendable shafts to suit most applications, as well as other accessories to compliment the range.



Enclosed - PE Series

- 3 to 8 Pole
- On-Load 20Amps to 125Amps
- Interlocked Enclosure Lid
- Padlocking Positions
- IP65 Enclosed Type
- Side Mounted Auxiliary Contacts
1 N/O + 1 N/C

Part Number	Description
PE69-3020	3 Pole 20 Amps
PE69-3025	3 Pole 25 Amps
PE69-3032	3 Pole 32 Amps
PE69-3040	3 Pole 40 Amps
PE69-3063	3 Pole 63 Amps
PE69-3080	3 Pole 80 Amps
PE69-4020	4 Pole 20 Amps
PE69-4025	4 Pole 25 Amps
PE69-4032	4 Pole 32 Amps
PE69-4040	4 Pole 40 Amps
PE69-4063	4 Pole 63 Amps
PE69-4080	4 Pole 80 Amps
PE69-6020	6 Pole 20 Amps
PE69-6025	6 Pole 25 Amps
PE69-6032	6 Pole 32 Amps
PE69-6040	6 Pole 40 Amps
PE69-6063	6 Pole 63 Amps
PE69-8020	8 Pole 20 Amps
PE69-8025	8 Pole 25 Amps
PE69-8032	8 Pole 32 Amps
PE69-8040	8 Pole 40 Amps
PE69-8063	8 Pole 63 Amps
PE69-8080	8 Pole 80 Amps
PE69-30100	3 Pole 100 Amps
PE69-30125	3 Pole 125 Amps
PE69-40100	4 Pole 100 Amps
PE69-40125	4 Pole 125 Amps

Base Mount - LB Series & Front Panel Mount - PM Series

- 3 & 4 pole
- On-Load 20Amps to 80Amps
- Door Interlocked Handles:
 - Red/Yellow & Black, 64 x 64mm, 48 x 48mm
 - 1 Padlocking Position on 48 x 48mm Version
 - 3 Padlocking Positions on 64 x 64mm Version

Part Number	Description
LB69-3020	3 Pole 20 Amps
LB69-3025	3 Pole 25 Amps
LB69-3032	3 Pole 32 Amps
LB69-3040	3 Pole 40 Amps
LB69-3063	3 Pole 63 Amps
LB69-3080	3 Pole 80 Amps
LB69-4020	4 Pole 20 Amps
LB69-4025	4 Pole 25 Amps
LB69-4032	4 Pole 32 Amps
LB69-4040	4 Pole 40 Amps
LB69-4063	4 Pole 63 Amps
LB69-4080	4 Pole 80 Amps

Part Number	Description
PM69-3020-B64	3P 20A Black Handle 64x64mm
PM69-3020-RY48	3P 20A Red/Yellow Handle 48x48mm
PM69-3020-RY64	3P 20A Red/Yellow Handle 64x64mm
PM69-3025-RY64	3P 25A Red/Yellow Handle 64x64mm
PM69-3032-RY64	3P 32A Red/Yellow Handle 64x64mm
PM69-3040-RY64	3P 40A Red/Yellow Handle 64x64mm
PM69-3063-RY64	3P 63A Red/Yellow Handle 64x64mm
PM69-3080-RY64	3P 80A Red/Yellow Handle 64x64mm
PM69-4020-RY64	4P 20A Red/Yellow Handle 64x64mm
PM69-4032-RY48	4P 32A Red/Yellow Handle 48x48mm
PM69-4040-RY64	4P 40A Red/Yellow Handle 64x64mm
PM69-4063-RY64	4P 63A Red/Yellow Handle 64x64mm

Direct Handle Base Mounted - DM Series

- 3 to 8 Pole
- On-Load 20Amps to 80Amps
- 1 Padlocking Position
- 48x48 Handle Black or Red/Yellow
- To Suit Distribution Boxes

Part Number	Description
DM69-3020-RY48	3 Pole 20 Amps Red/Yellow Handle
DM69-3032-RY48	3 Pole 32 Amps Red/Yellow Handle
DM69-3063-RY48	3 Pole 63 Amps Red/Yellow Handle
DM69-4032-RY48	4 Pole 32 Amps Red/Yellow Handle
DM69-4063-RY48	4 Pole 63 Amps Red/Yellow Handle
DM69-8032-RY48	8 Pole 32 Amps Red/Yellow Handle

PE & LB Series Accessories

Part Number	Description
H69-0001	Red/Yellow handle 64 x 64mm
H69-0001-B	Black handle 64 x 64mm
H69-0003	Red/Yellow handle 48 x 48mm
H69-0004	Black handle 48 x 48mm
J7049	Door handle mounting tool
E69-0001	Extension shaft – 100mm
E69-0002	Extension shaft – 200mm
E69-0003	Extension shaft – 300mm
E69-0004	Extension shaft – 400mm
A69-0001	Auxiliary contacts 1 N/O + 1 N/C
A69-0002	Auxiliary contacts 2 N/O
SN69-0001	Solid neutral block
SP69-0001	Add on neutral switching pole 20-40A



DC Isolators



Solar Isolators “SI..” are switchgears for interrupting the DC/AC-Inverter from the solar-panels. Photovoltaic installations have to be equipped with DC-isolators in accordance to IEC 60364-7-712.

- TRUE DC Isolator to UL508i
- Available in 2,4,6,8 Pole Versions
- Max. Rated Current 58A @ 1000VDC (Acc. To DC21B for SI32)
- Max. Rated Current 80A @ 600VDC (Acc. To DC21B for SI55)
- High Reliability Self-Cleaning & Vibration Resistant Knife Contacts
- Arc Suppression Chamber
- Operator Independent High Speed Switching (Typically 3ms)
- Additional Security with Patented “Safelock” Function
- Compact & Space Saving Design
- Maximum Operator Torque of 1Nm for Easy Operation (SI16-32)
- Poles can be Wired in Series to Increase Rating (DC21B & DC22B)
- Large Box Terminals with up to 25mm² Cross Sectional Wiring Area
- Different Mounting Versions Available (DIN / Base / Panel)
- Solar Connectors are Available (Plug / Socket / Branch)

Part Number	Description	Rating
SI16-PEL64R-2	Enclosed IP66 2 pole - 1 String	16A @ 800VDC
SI16-PEL64R-4	Enclosed IP66 4 pole - 2 Strings	16A @ 800VDC
SI16-PEL64R-4S	Enclosed IP66 4 pole linked - 1 String	16A @ 1500VDC
SI25-PEL64R-2	Enclosed IP66 2 pole - 1 String	25A @ 600VDC
SI25-PEL64R-4	Enclosed IP66 4 pole - 2 Strings	25A @ 600VDC
SI25-PEL64R-4S	Enclosed IP66 4 pole linked - 1 String	25A @ 1200VDC
SI32-PEL64R-2	Enclosed IP66 2 pole - 1 String	32A @ 600VDC
SI32-PEL64R-4	Enclosed IP66 4 pole - 2 Strings	32A @ 600VDC
SI32-PEL64R-4S	Enclosed IP66 4 pole linked - 1 String	32A @ 1200VDC
SI40-PEL64R-4	Enclosed IP66 4 pole - 2 Strings	40A @ 600VDC
SI55-PEL64R-4	Enclosed IP66 4 pole - 2 Strings	55A @ 600VDC
SI25-PM64-4	Panel Mount Lever Handle 64mm 4 pole - 2 Strings	25A @ 600VDC
SI32-PM64-4	Panel Mount Lever Handle 64mm 4 pole - 2 Strings	32A @ 600VDC
SI16-PM64R-2	Panel Mount Rotary Handle 64mm 2 pole - 1 String	16A @ 800VDC
SI25-PM64R-4	Panel Mount Rotary Handle 64mm 4 pole - 2 Strings	25A @ 600VDC
SI40-PM64R-4	Panel Mount Rotary Handle 64mm 4 pole - 2 Strings	40A @ 600VDC
SI55-PM64R-4	Panel Mount Rotary Handle 64mm 4 pole - 2 Strings	55A @ 600VDC
SI16-BMDC64-2	Base Mount Door Interlock Lever Handle 64mm 2 pole - 1 String	16A @ 800VDC
SI16-BMDC64R-2	Base Mount Door Interlock Rotary Handle 64mm 2 pole - 1 String	16A @ 800VDC
SI25-BMDC64R-2	Base Mount Door Interlock Rotary Handle 64mm 2 pole - 1 String	25A @ 600VDC
SI40-BMDC64R-4	Base Mount Door Interlock Rotary Handle 64mm 4 pole - 2 Strings	40A @ 600VDC
SI55-BMDC64R-4	Base Mount Door Interlock Rotary Handle 64mm 4 pole - 2 Strings	55A @ 600VDC
SI16-DB-4	Distribution Board Mount 4 pole - 2 Strings	16A @ 800VDC
SI25-DB-2	Distribution Board Mount 2 pole - 1 String	25A @ 600VDC
SI16-DBL-4	Distribution Board Mount Lockable 4 pole - 2 Strings	16A @ 800VDC
SI16-DBL-8	Distribution Board Mount Lockable 8 pole - 4 Strings	16A @ 800VDC
SI32-DBL-4	Distribution Board Mount Lockable 4 pole - 2 Strings	32A @ 600VDC
SI25-SHM-2	Single Hole Mounting 2 pole - 1 String	25A @ 600VDC
SI25-SHM-4	Single Hole Mounting 4 pole - 2 Strings	25A @ 600VDC



Motor Protection Circuit Breakers C4



IMO C4 Motor Protection Circuit Breakers are designed to be a compact reliable unit that offers high protection for 3 phase induction motors but can also be used as a motor starter, and for line protection. Integrating the functions of a circuit breaker and thermal overload relay in single unit so they significantly reduce the space requirements and wiring necessary for an installation that would have traditionally used a three component starter assembly.

With ratings from 0.16A to 100A in 3 frame sizes the IMO C4 has a short circuit breaking capacity of 100kA (Icu) and incorporates both thermal overload functionality and phase failure protection for phase-to-phase faults thereby offering comprehensive protection of the motor and controlling electrical circuitry.

The C4 is available with either rocker or rotary control and is complemented with a wide range of accessories that enable it to be connected to supplementary products, such as an IMO contactor, to give greater versatility. The design flexibility of the C4 ensures its convenience for installers, with the availability of auxiliary contacts that can be front or side mounted, to busbar systems available for the interconnection of up to 5 units; the C4 can be wired from either the top or bottom supply terminals without any reduction in ratings.

DIN rail and panel mount models are designed in accordance with IEC 60947-1, IEC 60947-2, IEC 60947-4-1, VDE 660 and UL approved (E223201) ensure that the IMO C4 circuit breakers are ideal for installation and OEM applications.



- Motor protection rating up to 100 Amps
- Short circuit breaking capacity up to 100kA
- Phase failure protection
- DIN rail mounting
- Wide range of accessories

Part Number	Description
C4/32R-0,63	0.4 - 0.63A Instantaneous Release 8,2A
C4/32R-1	0.63 - 1.0A Instantaneous Release 13A
C4/32R-1,6	1.0 - 1.6A Instantaneous Release 20,8A
C4/32R-2,5	1.6 - 2.5A Instantaneous Release 32,5A
C4/32R-4	2.5 - 4A Instantaneous Release 52A
C4/32R-6	4 - 6A Instantaneous Release 78A
C4/32R-8	5 - 8A Instantaneous Release 104A
C4/32R-10	6 - 10A Instantaneous Release 130A
C4/32R-13	9 - 13A Instantaneous Release 169A
C4/32R-17	11 - 17A Instantaneous Release 221A
C4/32R-22	14 - 22A Instantaneous Release 286A
C4/32T-1,6	1.0 - 1.6A Instantaneous Release 20,8A
C4/32T-4	2.5 - 4A Instantaneous Release 52A
C4/32T-6	4 - 6A Instantaneous Release 78A
C4/32T-8	5 - 8A Instantaneous Release 104A
C4/32T-13	9 - 13A Instantaneous Release 169A
C432VK1	Link Module for the C4/32... MCB's to MB Contactors
C432VK3	Link Module for the C4/32... MCB's to MC10N & MC22N Contactors
C4HQ11	Auxiliary Contact Block Top Mount, 1N/O + 1N/C
C4HS11	Auxiliary Contact Block Side Mount, 1N/O + 1N/C

This is just a selection from our range.
For the entire range, please go to
www.imopc.com

C4/32T	C4/32R	C4/63R	C4/100R

Miniature Circuit Breakers B10



The IMO range of Miniature Circuit Breakers has been designed for protection of electrical installations against overload and short circuits and is manufactured in accordance with EN60898.

Ordering Code & Examples

B10		C		10		04A <i>Rated Current Amps (A)</i>	
MCB 4.5kA	B4			10	Single Pole		
MCB 6kA	B6			1N	Single Pole + Neutral		
MCB 10kA	B10			20	Two Pole		
Operating Characteristic	B			30	Three Pole		
Operating Characteristic	C			3N	Three Pole + Neutral		
Operating Characteristic	D						

Current ratings (A): 2/4/6/10/16/20/25/32/40/50/63
 B6 range standard supply in B curve
 B4 range only available in 1P+N



Isolating Switch

Part Number	Description
BIS1063A	1 Pole 63A 230/400VAC
BIS2063A	2 Pole 63A 230/400VAC
BIS2100C	2 Pole 100A 230/400VAC
BIS2125A	2 Pole 125A 230/400VAC
BIS3063A	3 Pole 63A 230/400VAC
BIS4063A	4 Pole 63A 230/400VAC
BIS4125A	4 Pole 125A 230/400VAC

Miniature Circuit Breakers

Part Number	Description
B4C1N10A	MCB 4.5kA C Curve 1 Pole + Neutral 10A
B6B1010A	MCB 6kA B Curve 1 Pole 10A
B10C1002A	MCB 10kA C Curve 1 Pole 2A
B10C1006A	MCB 10kA C Curve 1 Pole 6A
B10C2010A	MCB 10kA C Curve 2 Pole 10A
B10D1002A	MCB 10kA D Curve 1 Pole 2A
B10D3010A	MCB 10kA D Curve 3 Pole 10A

Residual Circuit Breaker with Overload (RCBO A Type)

Part Number	Description
B6CR1N06-30-A	RCBO 6kA 30mA 1 Pole + Neutral 6A
B6CR1N10-30-A	RCBO 6kA 30mA 1 Pole + Neutral 10A
B6CR1N16-30-A	RCBO 6kA 30mA 1 Pole + Neutral 16A
B6CR1N20-30-A	RCBO 6kA 30mA 1 Pole + Neutral 20A
B6CR1N25-30-A	RCBO 6kA 30mA 1 Pole + Neutral 25A
B6CR1N32-30-A	RCBO 6kA 30mA 1 Pole + Neutral 32A

Residual Current Circuit Breaker (RCCB AC Type)

Part Number	Description
B10R2025-30	RCCB 10kA 30mA 1 Pole + Neutral 25A
B10R2032-30	RCCB 10kA 30mA 1 Pole + Neutral 32A
B10R2040-30	RCCB 10kA 30mA 1 Pole + Neutral 40A
B10R2063-30	RCCB 10kA 30mA 1 Pole + Neutral 63A
B10R4025-30	RCCB 10kA 30mA 3 Pole + Neutral 25A
B10R4032-30	RCCB 10kA 30mA 3 Pole + Neutral 32A
B10R4040-30	RCCB 10kA 30mA 3 Pole + Neutral 40A
B10R4063-30	RCCB 10kA 30mA 3 Pole + Neutral 63A

Accessories

Part Number	Description
B10-F3	Auxiliary contact side mounting 1C/O 6A
B10-S3	Shunt trip side mounting 230VAC
B10-LOCK	Lever locking device (padlock not included)
B10BB1P100-1M	Busbar Pin type 1P 1m
B10BB1F100-1M	Busbar Fork type 1P 1m
B10BB3P100-1M	Busbar Pin type 3P 1m
B10BB3F100-1M	Busbar Fork type 3P 1m
B10BBCAP1	End cap for 1P busbar
B10BBCAP3	End cap for 3P busbar



DIN Rail Terminals

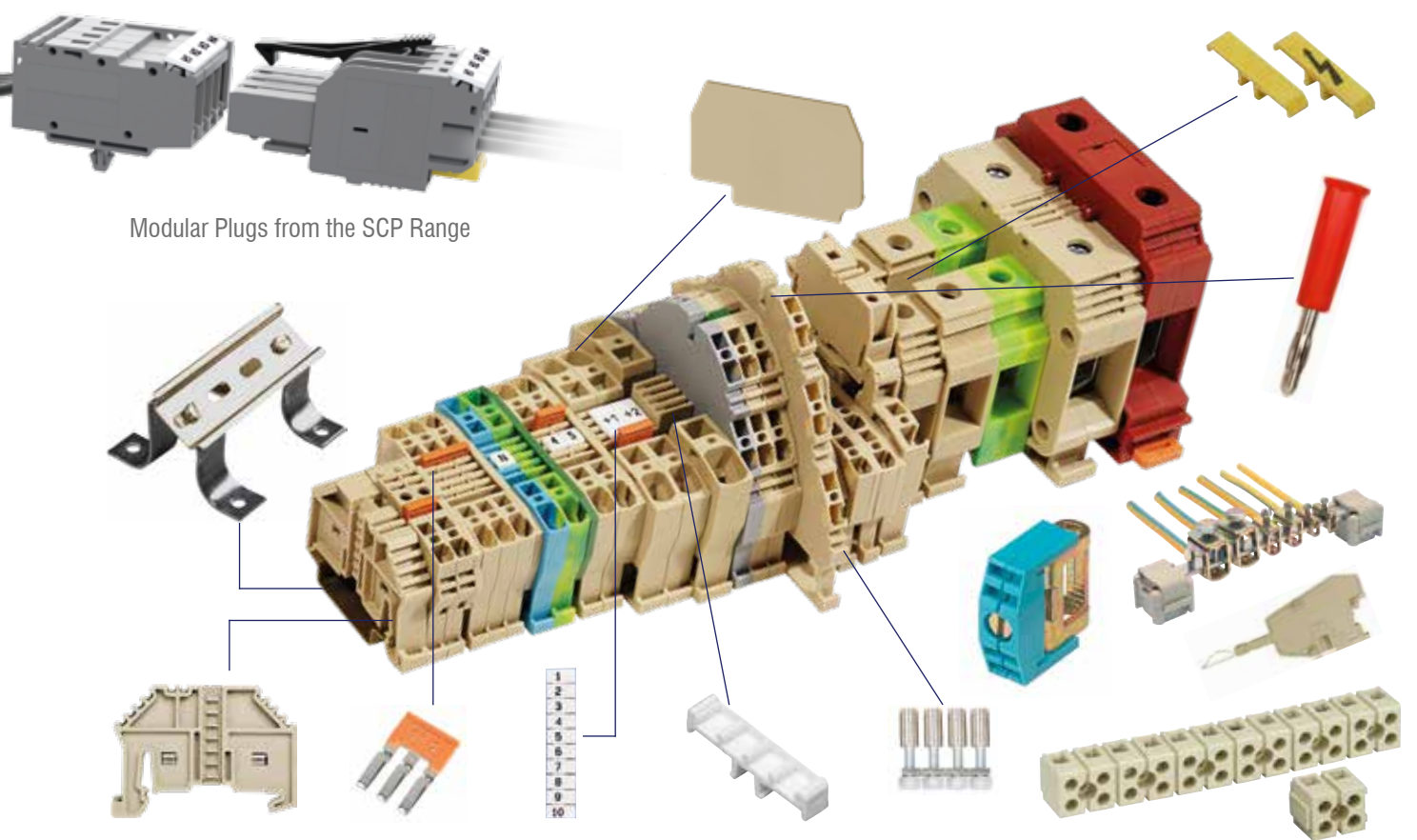


IMO's range of DIN Rail Terminals offers the customer a host of features at unbeatable prices. With high quality throughout the IMO range includes standard modular feed-through terminals, double and triple level terminals, fused terminals, disconnects and three-level sensor terminals just to highlight a few.

IMO DIN Rail Terminals can be offered with screw clamp, push-fit or out latest innovation - Spring Clamp Pluggable connections and although offered in beige as standard, the range is available in multiple colours throughout, allowing OEMs and installers to use colour code systems within their panels.

In line with the constant drive towards greater packing density of all components within the control panel, IMO has made its DIN Rail Terminals both lighter and more compact whilst their strength is ensured by using self-extinguishing unbreakable polyamide 6.6. IMO DIN Rail Terminals are offered in sizes from 2.5mm² through to 240mm² and have bevelled cable entry to simplify the introduction of the conductors.

Our terminals are designed to meet both national and international standards, and have gained approvals from organisations such as UL, CSA, DNV, VDE; and a number of products are also certified to IECEX.



Modular Plugs from the SCP Range

Screw Clamp ER Series	Screw Clamp Earth ERPE Series	Spring Clamp Pluggable SCP Series	SCP Plugs SCP-PT Series	Push Fit PF Series	Push Fit Earth PFPE Series

Screw Clamp Terminals

Part Number	Description
ER2.5BEIGE	2.5mm Beige Terminal
ER2.5PBEIGE	2.5mm Beige Terminal (35mm/32mm DIN Rail version)
ER4BEIGE	4mm Beige Terminal
ER4PBEIGE	4mm Beige Terminal (35mm/32mm DIN Rail version)
ER6BEIGE	6mm Beige Terminal
ER10BEIGE	10mm Beige Terminal
ER16BEIGE	16mm Beige Terminal
ER35PBEIGE	35mm Beige Terminal (35mm/32mm DIN Rail version)
ER70BEIGE	70mm High Current Terminal
ER95BEIGE	95mm High Current Terminal
ERPE2.5/4	2.5 to 4mm Earth Terminal
ERPE2.5P	2.5mm Earth Terminal (35mm/32mm DIN Rail version)
ERPE6/10	6 to 10mm Earth Terminal
ERPE16P	16mm Earth Terminal (35mm/32mm DIN Rail version)
ERPE35P	35mm Earth Terminal (35mm/32mm DIN Rail version)
ERB95	95mm Bolt Connection High Current Terminal
ERB150	150mm Bolt Connection High Current Terminal
ERD2.5BEIGE	2.5mm Double Deck Terminal
ERD4BEIGE	4mm Double Deck Terminal
ERT3BEIGE	2.5mm Triple Deck Terminal
ERTD4	4mm Disconnect Terminal
ERF2BEIGE	6mm Pull-Out Fuse Module Terminal
ERF3BEIGE	4mm Pull-Out Fuse Module Terminal
ERWT2NBEIGE	10mm Test/Disconnect Terminal
ERDT10/16	10/16mm Distribution Terminal

Push Fit Terminals

Part Number	Description
PF1.5BEIGE	1.5mm Beige Terminal
PF2.5BEIGE	2.5mm Beige Terminal
PF4BEIGE	4mm Beige Terminal
PF6BEIGE	6mm Beige Terminal
PF10BEIGE	10mm Beige Terminal
PFPE2.5P	2.5mm Earth Terminal (35mm/32mm DIN Rail version)
PFPE4P	4mm Earth Terminal (35mm/32mm DIN Rail version)
PFPE6P	6mm Earth Terminal (35mm/32mm DIN Rail version)
PFPE10P	10mm Earth Terminal (35mm/32mm DIN Rail version)
PFD2.5BEIGE	2.5mm Double Deck Beige Terminal
PFD4BEIGE	4mm Double Deck Beige Terminal
PFT3BEIGE	2.5mm Triple Deck Beige Terminal
PFTD2.5	2.5mm Disconnect Terminal
PFF3BEIGE	2.5mm Fuse Beige Terminal
PFD2.5E	1 In / 2 Out 2.5mm Feedthrough Terminal
PFD4E	1 In / 2 Out 4mm Feedthrough Terminal
PFD2.5C	2 In / 2 Out 2.5mm Feedthrough Terminal
PFD2.5PE	1 In / 2 Out 2.5mm Earth Terminal
PFD2.5CPE	2 In / 2 Out 2.5mm Earth Terminal
PFD3S	2.5mm Triple Decker Sensor Terminal

IMO Push Fit Terminals can save you up to 75% on wiring time compared to screw clamp connection terminals

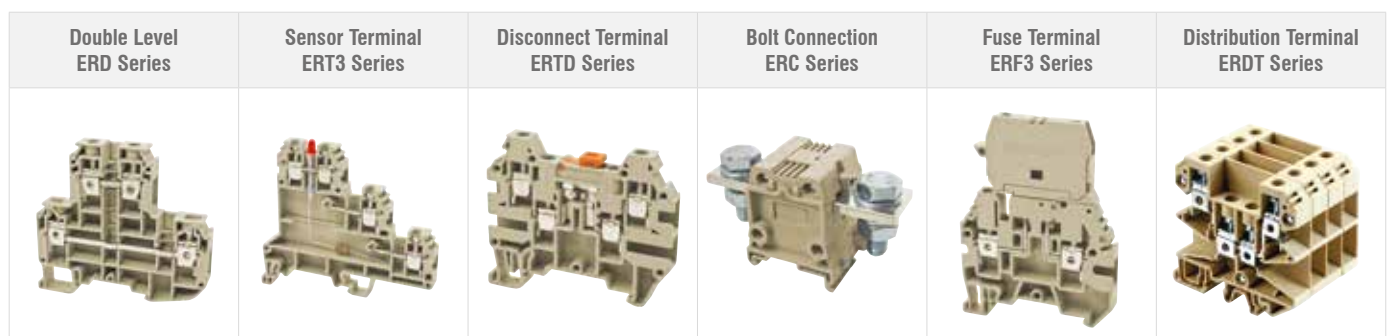
Spring Clamp Pluggable Terminals

Part Number	Description
SCP2.5GREY	2.5mm Terminal Wire to Plug
SCPPP2.5GREY	2.5mm Terminal Plug to Plug
SCP212.5GREY	2.5mm Terminal Double Wire Entry to Plug
SCP22K2.5GREY	2.5mm Knife Disconnect Terminal Double Wire Entry to Plug
SCP222.5GREY	2.5mm Terminal Double Wire Entry to Two Plugs
SCP22D2.5GREY	2.5mm Two-Level Terminal Double Wire Entry to Two Plugs
SCP22DB2.5GREY	2.5mm Two-Level Terminal Double Wire Entry to Two Plugs (Bridged)
SCPPE2.5P	2.5mm Earth Terminal Wire to Plug
SCPPPE2.5P	2.5mm Earth Terminal Plug to Plug
SCP21PE2.5P	2.5mm Earth Terminal Double Wire Entry to Plug
SCP22PE2.5P	2.5mm Earth Terminal Double Wire Entry to Two Plugs
SCP22DBPE2.5P	2.5mm Two-Level Earth Terminal Double Wire Entry to Two Plugs (Bridged)
SCP-HO2.5	2.5mm Terminal Wire to Plug Horizontal Mount
SCP-FM2.5	2.5mm Terminal Wire to Plug Connector Mount
SCP-HM2.5	2.5mm Terminal Wire to Plug Hole Mount

Spring Clamp Pluggable Plugs

Part Number	Description
SCP-PT2.5	2.5mm Single Pole Modular Plug
SCP-PTCC2.5	2.5mm Single Pole Modular Plug Cross Connectable
SCP-PTA2.5	2.5mm Single Pole Modular Plug 45° Angled
SCP-PTD2.5	2.5mm Single Pole Modular Plug Double Entry Cross Connectable

This is just a selection from our range.
For the entire range, please go to
www.imopc.com

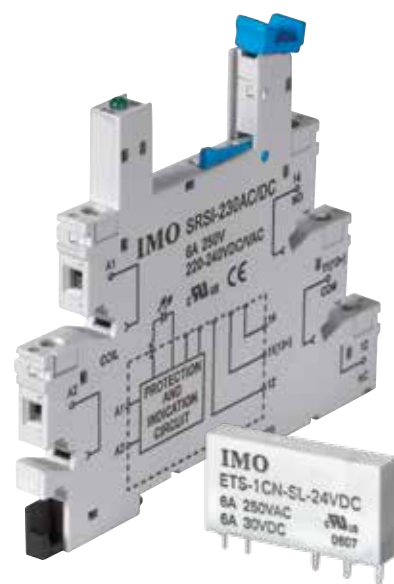


Industrial Power Relays & Sockets



IMO's range of Relays include Signal Relays, Power Relays, Automotive Relays and Solar Relays, and range of compatible sockets. IMO's relay manufacturing goes back as far as 1970, and over the years we have strived to innovate and produce new types of relays for developing technologies. In 1984 we developed the first BT Type 47 Telecom Relay, and again in 1990 we launched the first BABT compliant isolation relay for data transfer, confirming our place as one of the leading global relay manufacturers.

As part of our innovative nature we have manufactured a range of Slimline DIN Rail Mount Relays at just 6mm wide, which provide substantial space savings in a panel when compared to traditional plug-in style relays. The range with plug-in relays rated at 6 Amps allows easy maintenance without the need for complete rewiring of the socket. The sockets are available in wide operating voltages for both AC and DC circuits within the same unit, providing greater flexibility for the user and reducing the number of stock items required.



Slimline Plug-In Power Relays

Part Number	Description
ETS-1AN-SL-5VDC	Power Relay, 6A, 1N/O, 5VDC, AgNi, Sealed
ETS-1AN-SL-6VDC	Power Relay, 6A, 1N/O, 6VDC, AgNi, Sealed
ETS-1AN-SL-9VDC	Power Relay, 6A, 1N/O, 9VDC, AgNi, Sealed
ETS-1AN-SL-12VDC	Power Relay, 6A, 1N/O, 12VDC, AgNi, Sealed
ETS-1AN-SL-24VDC	Power Relay, 6A, 1N/O, 24VDC, AgNi, Sealed
ETS-1AN-SL-60VDC	Power Relay, 6A, 1N/O, 60VDC, AgNi, Sealed
ETS-1CN-SL-5VDC	Power Relay, 6A, 1C/O, 5VDC, AgNi, Sealed
ETS-1CN-SL-6VDC	Power Relay, 6A, 1C/O, 6VDC, AgNi, Sealed
ETS-1CN-SL-9VDC	Power Relay, 6A, 1C/O, 9VDC, AgNi, Sealed
ETS-1CN-SL-12VDC	Power Relay, 6A, 1C/O, 12VDC, AgNi, Sealed
ETS-1CN-SL-24VDC	Power Relay, 6A, 1C/O, 24VDC, AgNi, Sealed
ETS-1CN-SL-48VDC	Power Relay, 6A, 1C/O, 48VDC, AgNi, Sealed
ETS-1CN-SL-60VDC	Power Relay, 6A, 1C/O, 60VDC, AgNi, Sealed

Sockets for Slimline Plug-In Power Relays

Part Number	Description
SRSI-24AC/DC	DIN Rail Mount Socket for ETS-1AN-SL-24VDC, ETS-1AN-SL-6VDC, ETS-1AN-SL-9VDC, ETS-1CN-SL-12VDC, ETS-1CN-SL-24VDC, ETS-1CN-SL-6VDC, ETS-1CN-SL-9VDC, ETS-1CN1-SL-12VDC, ETS-1CN1-SL-6VDC, ETS-1CN1-SL-9VDC
SRSI-24DC	DIN Rail Mount Socket for ETS-1AN-SL-5VDC, ETS-1CN-SL-5VDC, ETS-1CN1-SL-5VDC
SRSI-60AC/DC	DIN Rail Mount Socket for ETS-1AN-SL-60VDC, ETS-1CN-SL-48VDC, ETS-1CN-SL-60VDC, ETS-1CN1-SL-48VDC, ETS-1CN1-SL-60VDC

Miniature Plug-In Power Relays

Part Number	Description
SRRHN-1CN-SL-115VAC	Miniature Power Relay, SPCO, 12A, 115VAC, 0.75VA, AgNi, Sealed
SRRHN-1CN-SL-12VDC	Miniature Power Relay, SPCO, 12A, 12VDC, 400mW, AgNi, Sealed
SRRHN-1CN-SL-230VAC	Miniature Power Relay, SPCO, 12A, 230VAC, 0.75VA, AgNi, Sealed
SRRHN-1CN-SL-24VDC	Miniature Power Relay, SPCO, 12A, 24VDC, 400mW, AgNi, Sealed
SRRHN-1CN-SL-5VDC	Miniature Power Relay, SPCO, 12A, 5VDC, 400mW, AgNi, Sealed
SRRHN-1CT-SL-12VDC	Miniature Power Relay, SPCO, 12A, 12VDC, 400mW, AgSnO ₂ , Sealed
SRRHN-1CT-SL-24VDC	Miniature Power Relay, SPCO, 12A, 24VDC, 400mW, AgSnO ₂ , Sealed
SRRHN-2CN-FL-24VDC	Miniature Power Relay, DPCO, 8A, 24VDC, 400mW, AgNi, Flux Proof
SRRHN-2CN-SL-115VAC	Miniature Power Relay, DPCO, 8A, 115VAC, 0.75VA, AgNi, Sealed
SRRHN-2CN-SL-12VDC	Miniature Power Relay, DPCO, 8A, 12VDC, 400mW, AgNi, Sealed
SRRHN-2CT-SL-12VDC	Miniature Power Relay, DPCO, 8A, 12VDC, 400mW, AgSnO ₂ , Sealed
SRRHN-2CT-SL-24VDC	Miniature Power Relay, DPCO, 8A, 24VDC, 400mW, AgSnO ₂ , Sealed
SRRHN-2CT-SL-5VDC	Miniature Power Relay, DPCO, 8A, 5VDC, 400mW, AgSnO ₂ , Sealed
SRP-1A1T-SL-12VDC	Miniature Power Relay, SPNO, 16A, 12VDC, 400mW, AgSnO ₂ , Sealed
SRP-1A1T-SL-24VDC	Miniature Power Relay, SPNO, 16A, 24VDC, 400mW, AgSnO ₂ , Sealed

Sockets for Miniature Plug-In Power Relays

Part Number	Description
SRNE3-S	Single Ended Socket for all 1 Pole SRRHN Relays
SRNE3-T	Double Ended Socket for all 1 Pole SRRHN Relays
SRSE1-0	PCB Socket for all 1 Pole SRRHN Relays
SRNE5-S	Single Ended Socket for all 2 Pole SRRHN Relays & SRP Relays
SRNE5-T	Double Ended Socket for all 2 Pole SRRHN Relays & SRP Relays
SRSE2-0	PCB Socket for all 2 Pole SRRHN Relays & SRP Relays

ETS	SRRHN/SRP	HYE	QYE	RSE

HYE Relays

Part Number	Description
HYE21PN12DC	2C/O, 7A, 12VDC Coil, Plug-in, LED & Manual Test/Latch
HYE21PN24AC	2C/O, 7A, 24VAC Coil, Plug-in, LED & Manual Test/Latch
HYE21PN24DC	2C/O, 7A, 24VDC Coil, Plug-in, LED & Manual Test/Latch
HYE21PN120AC	2C/O, 7A, 120VAC Coil, Plug-in, LED & Manual Test/Latch
HYE21PN240AC	2C/O, 7A, 240VAC Coil, Plug-in, LED & Manual Test/Latch
HYE21XX12DC	2C/O, 7A, 12VDC Coil, Plug-in
HYE21XX24AC	2C/O, 7A, 24VAC Coil, Plug-in
HYE21XX24DC	2C/O, 7A, 24VDC Coil, Plug-in
HYE21XX120AC	2C/O, 7A, 120VAC Coil, Plug-in
HYE21XX240AC	2C/O, 7A, 240VAC Coil, Plug-in
HYE31PN24AC	3C/O, 7A, 24VAC Coil, Plug-in, LED & Manual Test/Latch
HYE31PN24DC	3C/O, 7A, 24VDC Coil, Plug-in, LED & Manual Test/Latch
HYE31PN230AC	3C/O, 7A, 230VAC Coil, Plug-in, LED & Manual Test/Latch
HYE41PN12AC	4C/O, 5A, 12VAC Coil, Plug-in, LED & Manual Test/Latch
HYE41PN12DC	4C/O, 5A, 12VDC Coil, Plug-in, LED & Manual Test/Latch
HYE41PN24AC	4C/O, 5A, 24VAC Coil, Plug-in, LED & Manual Test/Latch
HYE41PN24DC	4C/O, 5A, 24VDC Coil, Plug-in, LED & Manual Test/Latch
HYE41PN48AC	4C/O, 5A, 48VAC Coil, Plug-in, LED & Manual Test/Latch
HYE41PN48DC	4C/O, 5A, 48VDC Coil, Plug-in, LED & Manual Test/Latch
HYE41PN120AC	4C/O, 5A, 120VAC Coil, Plug-in, LED & Manual Test/Latch
HYE41PN110DC	4C/O, 5A, 110VDC Coil, Plug-in, LED & Manual Test/Latch
HYE41PN240AC	4C/O, 5A, 240VAC Coil, Plug-in, LED & Manual Test/Latch
HYE41PX12DC	4C/O, 5A, 12VDC Coil, Plug-in, Manual Test/Latch
HYE41PX24DC	4C/O, 5A, 24VDC Coil, Plug-in, Manual Test/Latch
HYE41PX48DC	4C/O, 5A, 48VDC Coil, Plug-in, Manual Test/Latch
HYE41PX120AC	4C/O, 5A, 120VAC Coil, Plug-in, Manual Test/Latch
HYE41PX240AC	4C/O, 5A, 240VAC Coil, Plug-in, Manual Test/Latch
HYE41XX12DC	4C/O, 5A, 12VDC Coil, Plug-in
HYE41XX24AC	4C/O, 5A, 24VAC Coil, Plug-in
HYE41XX48AC	4C/O, 5A, 48VAC Coil, Plug-in
HYE41XX120AC	4C/O, 5A, 120VAC Coil, Plug-in
HYE41XX240AC	4C/O, 5A, 240VAC Coil, Plug-in
HYE42XX12DC	4C/O, 5A, 12VDC Coil, PCB Mount
HYE42XX24AC	4C/O, 5A, 24VAC Coil, PCB Mount
HYE42XX24DC	4C/O, 5A, 24VDC Coil, PCB Mount
HYE42XX120AC	4C/O, 5A, 120VAC Coil, PCB Mount
HYE42XX240AC	4C/O, 5A, 240VAC Coil, PCB Mount

DIN Rail Sockets for HYE Relays

Part Number	Description
SRNE2-S	Single Ended Socket for all 2 Pole HYE Relays
SRNE2-D	Double Ended Socket for all 2 Pole HYE Relays
SRNE3-C	Compact Socket for all 3 Pole HYE Relays
SRNE3-D	Double Ended Socket for all 3 Pole HYE Relays
SRNE4-C	Compact Socket for all 4 Pole HYE Relays
SRNE4-S	Single Ended Socket for all 4 Pole HYE Relays
SRNE4-D	Double Ended Socket for all 4 Pole HYE Relays

QYE Relays

Part Number	Description
QYE21XN12AC	2C/O, 10A, 12VAC Coil, LED, Plug-in
QYE21XN12DC	2C/O, 10A, 12VDC Coil, LED, Plug-in
QYE21XN24AC	2C/O, 10A, 24VAC Coil, LED, Plug-in
QYE21XN24DC	2C/O, 10A, 24VDC Coil, LED, Plug-in
QYE21XN120AC	2C/O, 10A, 120VAC Coil, LED, Plug-in
QYE21XN230AC	2C/O, 10A, 230VAC Coil, LED, Plug-in
QYE21XX12DC	2C/O, 10A, 12VDC Coil, Plug-in
QYE21XX24AC	2C/O, 10A, 24VAC Coil, Plug-in
QYE21XX24DC	2C/O, 10A, 24VDC Coil, Plug-in
QYE21XX120AC	2C/O, 10A, 120VAC Coil, Plug-in
QYE21XX240AC	2C/O, 10A, 240VAC Coil, Plug-in
QYE21XF12DC	2C/O, 10A, 12VDC Coil, Plug-in, Flanged
QYE21XF240AC	2C/O, 10A, 240VAC Coil, Plug-in, Flanged
QYE22XX12DC	2C/O, 10A, 12VDC Coil, PCB Mount
QYE22XX24DC	2C/O, 10A, 24VDC Coil, PCB Mount
QYE22XX240AC	2C/O, 10A, 240VAC Coil, PCB Mount

Sockets for QYE Relays

Part Number	Description
SRHE2-C	DIN Rail Mount Socket for all QYE Plug In Relays
SRPE2-0	PCB Mount Socket for all QYE Plug In Relays

RSE Relays

Part Number	Description
RSE2PN12AC	8 pins, 2C/O, 10A, 12VAC Coil, Plug-in, LED & Manual Test/Latch
RSE2PN24AC	8 pins, 2C/O, 10A, 24VAC Coil, Plug-in, LED & Manual Test/Latch
RSE2PN24DC	8 pins, 2C/O, 10A, 24VDC Coil, Plug-in, LED & Manual Test/Latch
RSE2PN48DC	8 pins, 2C/O, 10A, 48VDC Coil, Plug-in, LED & Manual Test/Latch
RSE2PN110AC	8 pins, 2C/O, 10A, 110VAC Coil, Plug-in, LED & Manual Test/Latch
RSE2PN110DC	8 pins, 2C/O, 10A, 110VDC Coil, Plug-in, LED & Manual Test/Latch
RSE2PN230AC	8 pins, 2C/O, 10A, 230VAC Coil, Plug-in, LED & Manual Test/Latch
RSE3PN12DC	11 pins, 3C/O, 10A, 12VDC Coil, Plug-in, LED & Manual Test/Latch
RSE3PN24AC	11 pins, 3C/O, 10A, 24VAC Coil, Plug-in, LED & Manual Test/Latch
RSE3PN24DC	11 pins, 3C/O, 10A, 24VDC Coil, Plug-in, LED & Manual Test/Latch
RSE3PN48DC	11 pins, 3C/O, 10A, 48VDC Coil, Plug-in, LED & Manual Test/Latch
RSE3PN110AC	11 pins, 3C/O, 10A, 110VAC Coil, Plug-in, LED & Manual Test/Latch
RSE3PN110DC	11 pins, 3C/O, 10A, 110VDC Coil, Plug-in, LED & Manual Test/Latch
RSE3PN230AC	11 pins, 3C/O, 10A, 230VAC Coil, Plug-in, LED & Manual Test/Latch

DIN Rail Sockets for RSE Relays

Part Number	Description
SRRE8	Standard Socket for all 8 Pin RSE Relays
SRRE8-M	Common Wiring Terminal Socket for all 8 Pin RSE Relays
SRRE11	Standard Socket for all 11 Pin RSE Relays
SRRE11-M	Common Wiring Terminal Socket for all 11 Pin RSE Relays



Custom Cable Solutions

- Built to your specific requirements
- Supplied to you under a single part number
- Top quality, competitively priced solutions
- Can accommodate certified wiring or components (eg. UL, TUV etc.)



However simple or complex the cable solution you require, built entirely to your exact specification, prepared the way you want it, IMO is your supplier of choice!

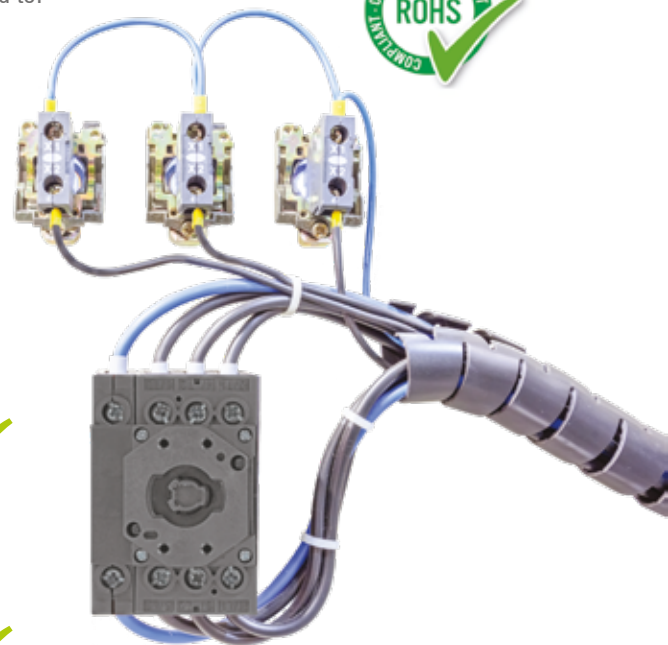
We offer customers prepared cables, cable assemblies and cable looms, with or without crimps, terminations & housings, with no volume too high. We extrude and produce many common types of certified or non-certified equipment cable, in a selection of materials including PVC, Teflon™ and silicone.



Not Just For OEMs...

IMO's bespoke cabling service is not just for OEMs. The cable solutions we manufacture can be used across a multitude of industrial applications, including but not limited to:-

- **Mobility** - Stair Lifts, Patient Handling
- **Security** - Alarm Systems, Fire Systems, Access Systems
- **H.V.A.C.** - Control Panels, Heating Controls, Air Con Equipment
- **Industrial** - PAT Testing, Lift Manufacturing, Boiler Manufacturing
- **Catering** - Food Processing & Packaging, Vending Machines
- **White Goods** - Shower Manufacturing, Refrigeration Manufacturing



No tooling investment ✓

No more crimping and assembling ✓

No more managing inventory of wires and terminations ✓

Huge time and cost savings for you and your company ✓

Whether you need a complex assembly or simple terminated wire, we can work from a drawing, a formal design or a sample to start the process.

Component Solutions for EV Charging

MCBs

Miniature Circuit Breakers protect from over-current and short circuit situations to safeguard assets from risk of damage from overheating and fire.

In accordance with IEC 60898-1.



RCBOs

Residual Current Circuit Breakers with Overcurrent Protection combine the functions of an MCB and RCD to provide all-round protection in a compact package.

In accordance with IEC 60898-1.



RCDs

Residual Current Devices protect personnel from contact with live or damaged wires and components by disconnecting power when an earth leakage current is detected. Standard AC and Type B available.



Branch Isolators

Of modular design, IMO branch isolators are robust and offer power isolation, mounted on a DIN rail.



AC/DC Isolators

IMOs AC & DC Isolators offer robust, lockable power isolation for safe and controlled maintenance and repair activities.

IMO Isolators carry UL safety approvals.



Contactors

IMO's range of Modular Contactors offer control and switching of charging current flow. High reliability for faultless switching.

Full range of accessories and options available including PCB mounting.



Power Supplies

IMO's range of UL approved modular power supplies offer high efficiency, universal input and IMO's 3 year warranty.



For use by EV Installers and EV Charging Manufacturers

As a world leader in the solar industry with many global OEMs using our DC switching and isolation technology, IMO is pleased to introduce its EV Protect range specifically designed to meet the requirements of the Electric Vehicle market.

No matter whether you are an EV Installer looking for a simple one-stop solution for a domestic installation, or an EV Charging Manufacturer looking to source components to make your offering more competitive, IMO has the EV Charging components for you.

A dedicated EV Charging brochure can be found on our website.



IMO Worldwide Offices

IMO Precision Controls Limited

The Interchange
Frobisher Way
Hatfield, Herts AL10 9TG
United Kingdom

Tel: 01707 414 444
Fax: 01707 414 445
Email: imo@imopc.com
Web: www.imopc.com

IMO Jeambrun Automation SAS

5, Rue Alfred De Musset
94100
Saint-Maur-Des-Fosses
France

Tel: 0800 912 712 (n° gratuit)
Fax: 0145 134 737
Email: imo-fr@imopc.com
Web: www.imojeambrun.fr

IMO Automazione

Via Belfiore 10,
50144 Firenze (FI)
Italia

Tel: 800 930 872 (toll free)
Fax: 8000 452 6445
Email: imo-it@imopc.com
Web: www.imopc.it

IMO Canada

1B-701 Rossland Road East
Suite #608
Whitby, Ontario L1N 9K3
Canada

Tel: (+1) 905 799 9237

Email: sales-na@imopc.com
Web: www.imopc.com

IMO Automation LLC

Steeplechase Industrial Park Suite
E, 5845 Steeplechase Blvd
Cumming, GA 30040
USA

Tel: 404 476 8810

Email: sales-na@imopc.com
Web: www.imoautomation.com

IMO South Africa (Pty) Ltd

Unit 12A, Longclaw Drive
Montague Gardens
Cape Town 7441
South Africa

Tel: 021 551 1787
Fax: 021 555 0676

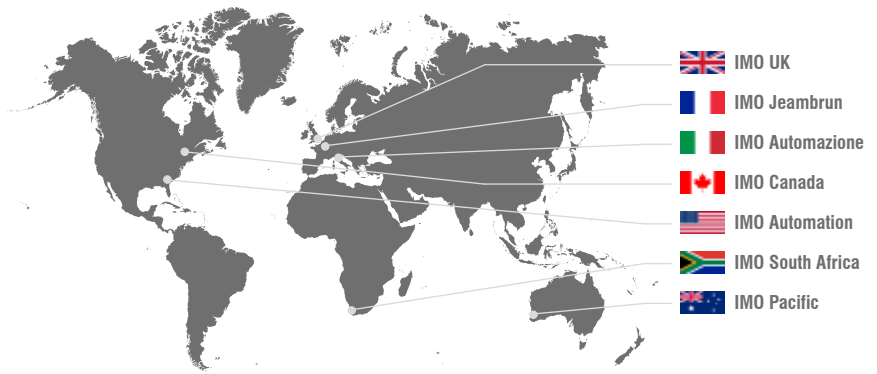
Email: info@imopc.co.za
Web: www.imopc.co.za

IMO Pacific Pty Ltd

Unit 9, Dillington Pass
Landsdale
Perth WA 6065
Australia

Tel: 1300 34 21 31
Fax: 08 9303 9908

Email: sales@imopacific.com.au
Web: www.imopacific.com.au



Connect with and follow IMO Precision Controls Ltd.
for the latest news, views and reviews